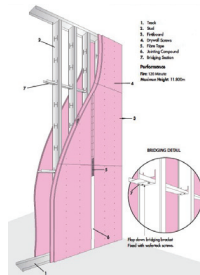


## EXTRA HEIGHT DRYWALL PARTITION SYSTEM

The 1 hour and 2 hour fire rated partition walling systems with heights up to 14m high!

- Panels up to 14m high
- 1 hour or 2 hour fire rated
- SANS 10177 -2: 2005 Fire resistance test
- 150mm wide stud and track
- Unlimited lengths or building widths
- Quick and clean installation
- Spray coat applied for quality finish & speed
- Lightweight so no strengthening foundations



## PARTITION SYSTEMS

Gyproc's wall systems go beyond just partitioning with its designed high-performance solutions that enhance thermal comfort, sound absorption and fire resistance. For busy commercial spaces or quiet residential homes, our lightweight, durable systems offer versatility and sustainability.

- Fire rated
- Sound performance
- Impact resistant
- Quality
- Speed of Erection



## CEILING & PARTITION SYSTEMS



## CEILING SYSTEMS

Direct fix ceiling systems using light steel bracing gridwork to the existing structure with 9mm Gypsum, 12mm Gypsum, 12mm Firestop Gypsum, 15mm Firestop gypsum (1hour FR) or 2x15mm Firestop gypsum (2hour FR). Joints treated with compound, sanded smooth & entire ceiling skimmed with 3mm skimming plaster. Ceiling edging finished off with plaster trim edging against walling system.

Suspended ceiling grid suspension hanger system using T37 primary tee sections at 1 200mm centres with cut tee sections in between to concrete soffit or steel purlins. We offer an array of different tile options catering for every project requirements - Vinyl, acoustic, fire rated, etc. Our suppliers include OWA, AMF, Gyproc, etc.